

# SEND Benchmarking Sector-Led Improvement

## Annual Report (Public)

2015

---

**WARNING - This spreadsheet uses macros please ensure you have enabled macros before attempting to use**

---


**This report is has been produced using data published in the Local Authority Interactive Tool and can therefore be shared with external partners and the public.**

If you have any queries regarding this report please contact Joe Cornford-Hutchings, Information Analyst, at **CS.DataManagement@eastsussex.gov.uk** or on 01273 335931.

---

**Please click the icon below to go to the home page (Contents)**



Click the  icon on the home page to return to this page.

Select your LA here to highlight throughout the report:

(None)

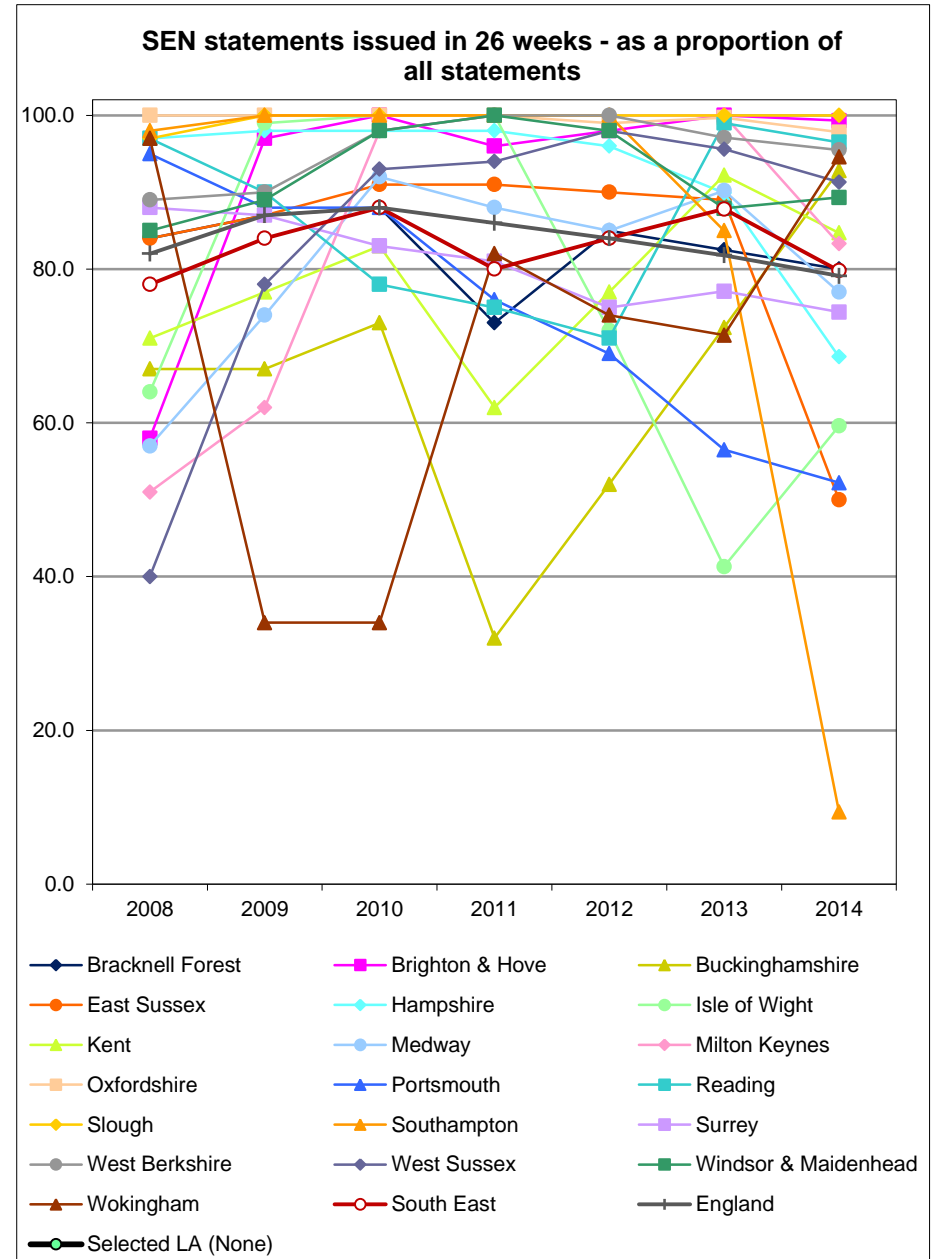
You can toggle LA's on and off on the charts by using the tick boxes on each page- this will only affect the section in which the tick boxes are located.

## Contents

	Page
<a href="#"><u>Plans completed within 26 weeks all statements</u></a>	3
<a href="#"><u>Plans completed within 26 weeks excluding exceptions</u></a>	4
<a href="#"><u>Proportion of new plans placed in maintained schools</u></a>	5
<a href="#"><u>% of Primary pupils with SEN with a statement/plan</u></a>	6
<a href="#"><u>% of Primary pupils with SEN but no statement/plan</u></a>	7
<a href="#"><u>% of Secondary pupils with SEN with a statement/plan</u></a>	8
<a href="#"><u>% of Secondary pupils with SEN but no statement/plan</u></a>	9
<a href="#"><u>% of All pupils with SEN with a statement/plan</u></a>	10
<a href="#"><u>% of All pupils with SEN but no statement/plan</u></a>	11
<a href="#"><u>Rate of SEN Appeals</u></a>	12
<a href="#"><u>GLD SEN with statement</u></a>	13
<a href="#"><u>GLD SEN without statement</u></a>	14
<a href="#"><u>KS2 L4 RWM SEN with statement/plan</u></a>	15
<a href="#"><u>KS2 L4 RWM SEN but no statement/plan</u></a>	16
<a href="#"><u>5A*-C GCSE inc E&amp;M SEN with statement/plan</u></a>	17
<a href="#"><u>5A*-C GCSE inc E&amp;M SEN but no statement/plan</u></a>	18
<a href="#"><u>Level 3 at 19 SEN with a statement/plan</u></a>	19
<a href="#"><u>Level 3 at 19 SEN but no statement/plan</u></a>	20
<a href="#"><u>% 16-17 with SEN in education and training</u></a>	21

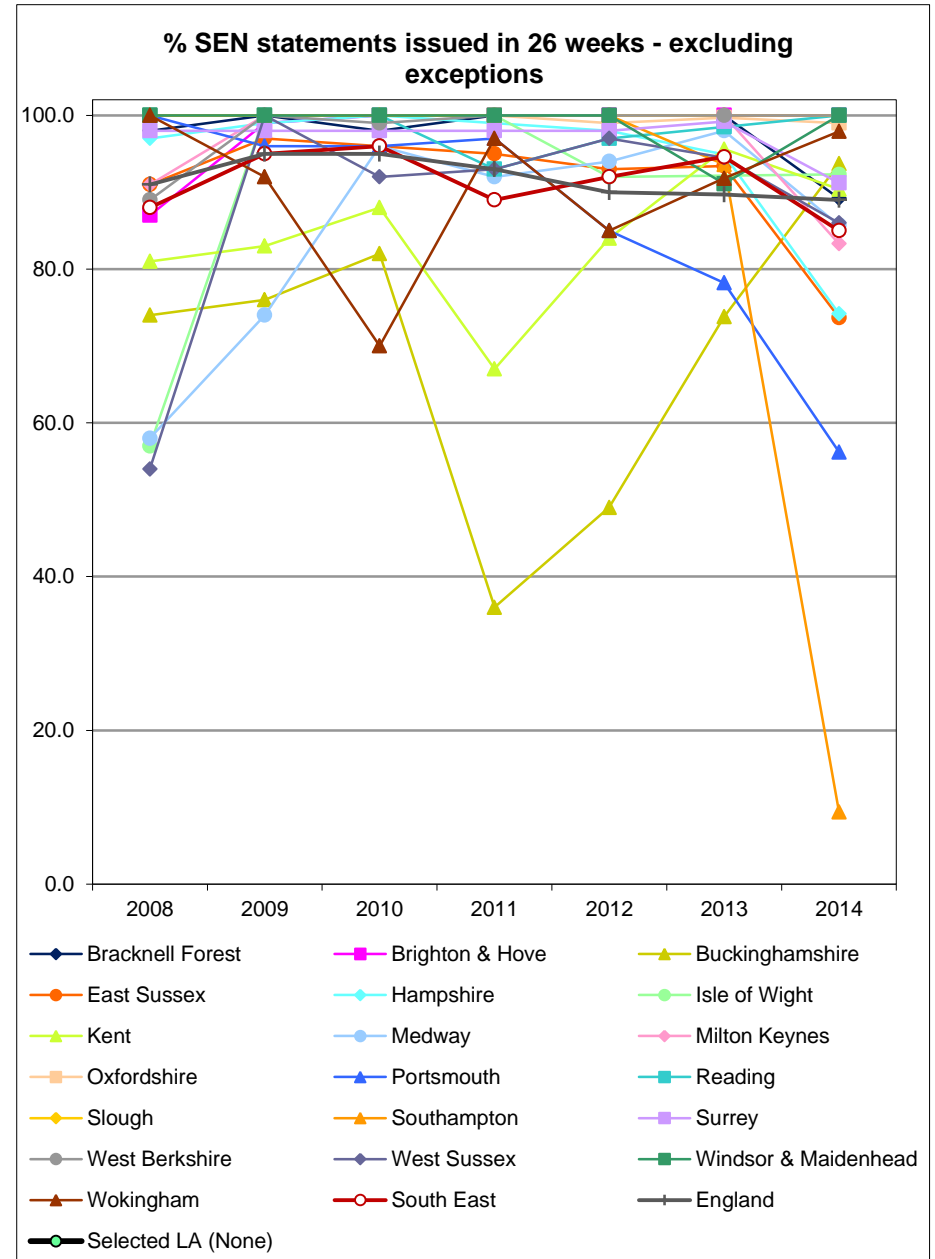
### SEN statements issued in 26 weeks - as a proportion of all statements

	2008	2009	2010	2011	2012	2013	2014	2015 Rank
Bracknell Forest	84.0	87.0	88.0	73.0	85.0	82.5	80.0	12
Brighton & Hove	58.0	97.0	100.0	96.0	98.0	100.0	99.3	2
Buckinghamshire	67.0	67.0	73.0	32.0	52.0	72.4	92.8	7
East Sussex	84.0	87.0	91.0	91.0	90.0	89.0	50.0	18
Hampshire	97.0	98.0	98.0	98.0	96.0	89.9	68.6	15
Isle of Wight	64.0	99.0	100.0	100.0	72.0	41.3	59.6	16
Kent	71.0	77.0	83.0	62.0	77.0	92.2	84.7	10
Medway	57.0	74.0	92.0	88.0	85.0	90.2	77.0	13
Milton Keynes	51.0	62.0	98.0	100.0	100.0	100.0	83.3	11
Oxfordshire	100.0	100.0	100.0	100.0	99.0	99.7	97.8	3
Portsmouth	95.0	88.0	88.0	76.0	69.0	56.5	52.2	17
Reading	97.0	90.0	78.0	75.0	71.0	99.0	96.5	4
Slough	97.0	100.0	100.0	100.0	100.0	100.0	100.0	1
Southampton	98.0	100.0	100.0	100.0	100.0	85.0	9.4	19
Surrey	88.0	87.0	83.0	81.0	75.0	77.1	74.4	14
West Berkshire	89.0	90.0	98.0	100.0	100.0	97.1	95.5	5
West Sussex	40.0	78.0	93.0	94.0	98.0	95.6	91.3	8
Windsor & Maidenhead	85.0	89.0	98.0	100.0	98.0	87.9	89.3	9
Wokingham	97.0	34.0	34.0	82.0	74.0	71.4	94.6	6
South East	78.0	84.0	88.0	80.0	84.0	87.8	79.8	--
England	82.0	87.0	88.0	86.0	84.0	81.8	79.1	--



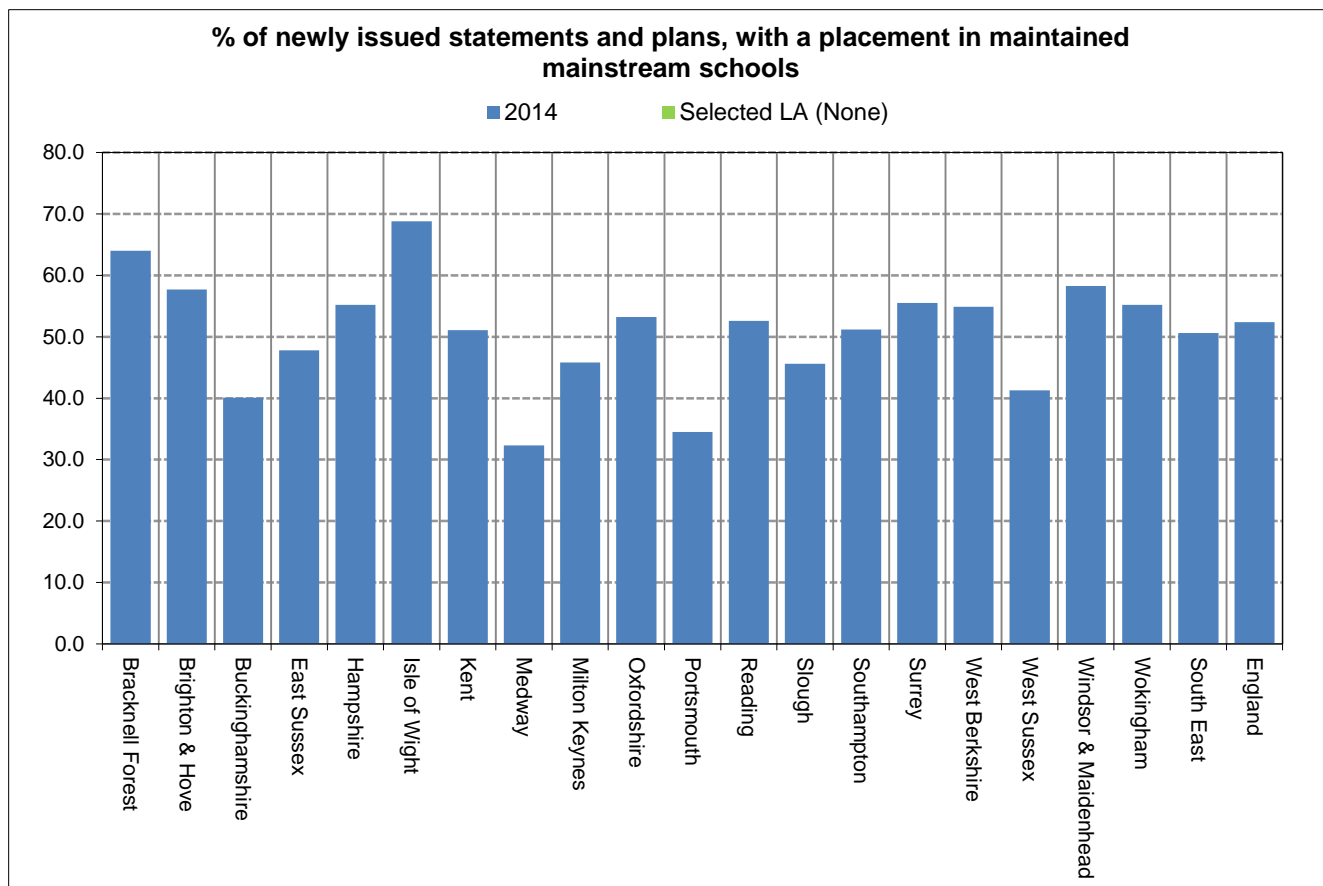
### % SEN statements issued in 26 weeks - excluding exceptions

	2008	2009	2010	2011	2012	2013	2014	2014 Rank
Bracknell Forest	98.0	100.0	98.0	100.0	100.0	100.0	89.2	12
Brighton & Hove	87.0	99.0	100.0	100.0	100.0	100.0	100.0	1
Buckinghamshire	74.0	76.0	82.0	36.0	49.0	73.8	93.7	8
East Sussex	91.0	97.0	96.0	95.0	93.0	93.4	73.7	17
Hampshire	97.0	99.0	100.0	99.0	98.0	94.9	74.2	16
Isle of Wight	57.0	100.0	100.0	100.0	92.0		92.3	9
Kent	81.0	83.0	88.0	67.0	84.0	95.6	90.4	11
Medway	58.0	74.0	96.0	92.0	94.0	98.0	85.7	14
Milton Keynes	91.0	100.0	100.0	100.0	100.0	100.0	83.3	15
Oxfordshire	100.0	100.0	100.0	100.0	99.0	99.7	99.0	6
Portsmouth	100.0	96.0	96.0	97.0	85.0	78.2	56.2	18
Reading	100.0	100.0	100.0	93.0	97.0	98.5	100.0	1
Slough	100.0	100.0	100.0	100.0	100.0	100.0	100.0	1
Southampton	100.0	100.0	100.0	100.0	100.0	93.6	9.4	19
Surrey	98.0	98.0	98.0	98.0	98.0	99.2	91.2	10
West Berkshire	89.0	100.0	99.0	100.0	100.0	100.0	100.0	1
West Sussex	54.0	100.0	92.0	93.0	97.0	94.5	86.0	13
Windsor & Maidenhead	100.0	100.0	100.0	100.0	100.0	91.1	100.0	1
Wokingham	100.0	92.0	70.0	97.0	85.0	91.8	97.9	7
South East	88.0	95.0	96.0	89.0	92.0	94.6	85.0	--
England	91.0	95.0	95.0	93.0	90.0	89.7	89.0	--



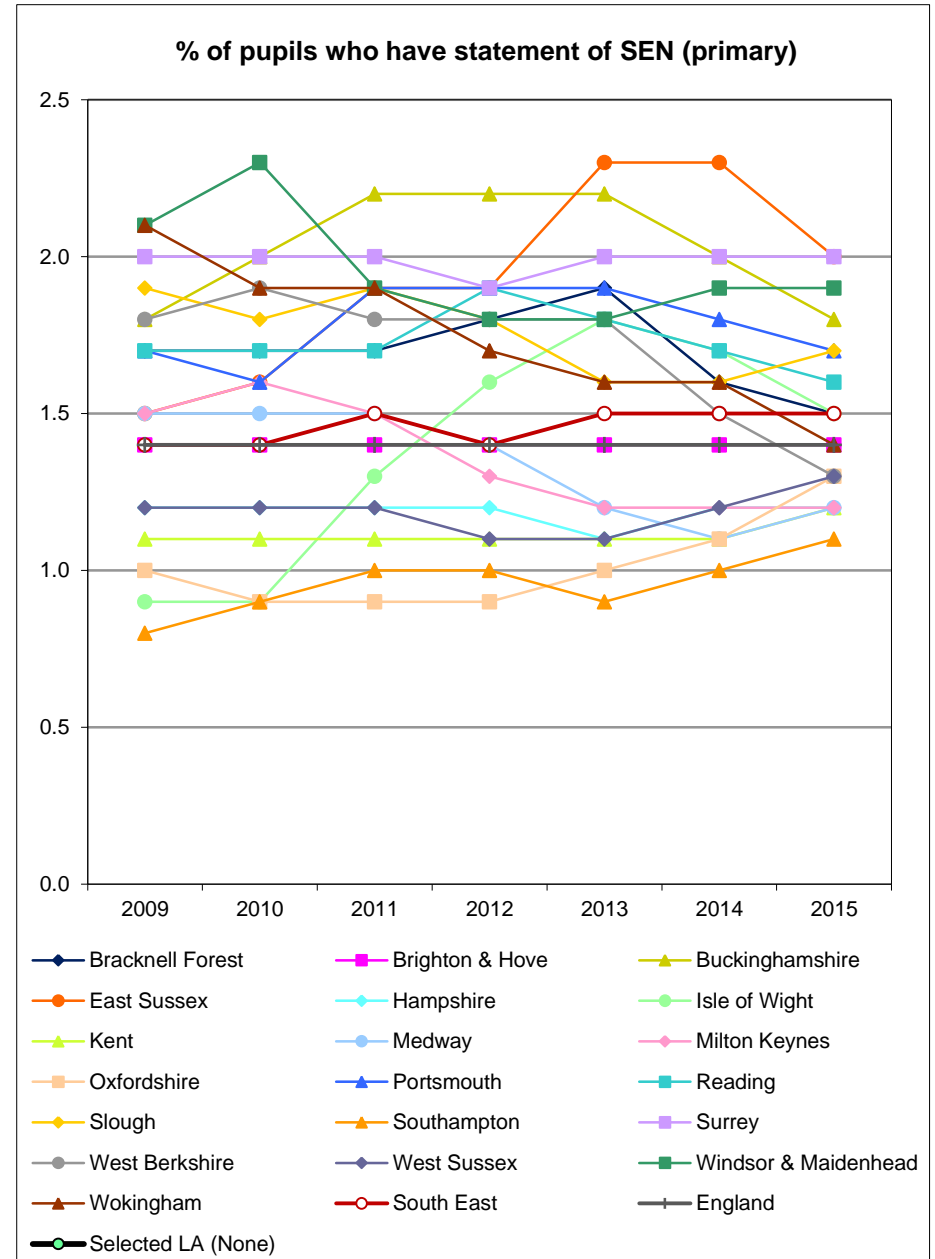
## Proportion of newly issued statements and plans, with a placement in maintained mainstream schools

	2014	2014 Rank
Bracknell Forest	64.0	2
Brighton & Hove	57.7	4
Buckinghamshire	40.1	17
East Sussex	47.8	13
Hampshire	55.2	6
Isle of Wight	68.8	1
Kent	51.1	12
Medway	32.3	19
Milton Keynes	45.8	14
Oxfordshire	53.2	9
Portsmouth	34.5	18
Reading	52.6	10
Slough	45.6	15
Southampton	51.2	11
Surrey	55.5	5
West Berkshire	54.9	8
West Sussex	41.3	16
Windsor & Maidenhead	58.3	3
Wokingham	55.2	6
South East	50.6	--
England	52.4	--



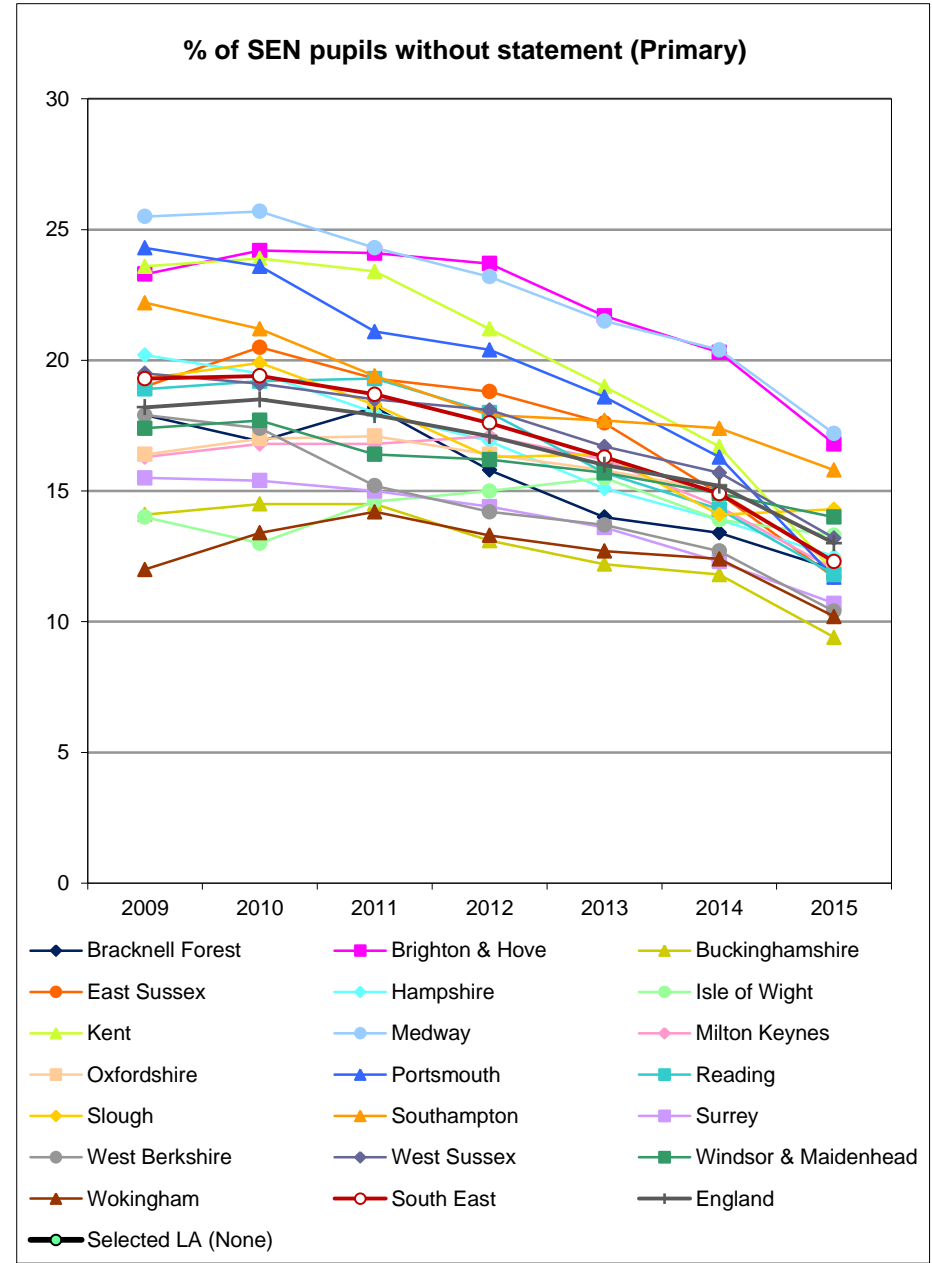
### % of pupils who have statement of SEN (primary)

	2009	2010	2011	2012	2013	2014	2015	2015 Rank
Bracknell Forest	1.7	1.7	1.7	1.8	1.9	1.6	1.5	8
Brighton & Hove	1.4	1.4	1.4	1.4	1.4	1.4	1.4	10
Buckinghamshire	1.8	2.0	2.2	2.2	2.2	2.0	1.8	4
East Sussex	1.5	1.6	1.9	1.9	2.3	2.3	2.0	1
Hampshire	1.2	1.2	1.2	1.2	1.1	1.2	1.2	15
Isle of Wight	0.9	0.9	1.3	1.6	1.8	1.7	1.5	8
Kent	1.1	1.1	1.1	1.1	1.1	1.1	1.2	15
Medway	1.5	1.5	1.5	1.4	1.2	1.1	1.2	15
Milton Keynes	1.5	1.6	1.5	1.3	1.2	1.2	1.2	15
Oxfordshire	1.0	0.9	0.9	0.9	1.0	1.1	1.3	12
Portsmouth	1.7	1.6	1.9	1.9	1.9	1.8	1.7	5
Reading	1.7	1.7	1.7	1.9	1.8	1.7	1.6	7
Slough	1.9	1.8	1.9	1.8	1.6	1.6	1.7	5
Southampton	0.8	0.9	1.0	1.0	0.9	1.0	1.1	19
Surrey	2.0	2.0	2.0	1.9	2.0	2.0	2.0	1
West Berkshire	1.8	1.9	1.8	1.8	1.8	1.5	1.3	12
West Sussex	1.2	1.2	1.2	1.1	1.1	1.2	1.3	12
Windsor & Maidenhead	2.1	2.3	1.9	1.8	1.8	1.9	1.9	3
Wokingham	2.1	1.9	1.9	1.7	1.6	1.6	1.4	10
South East	1.4	1.4	1.5	1.4	1.5	1.5	1.5	--
England	1.4	1.4	1.4	1.4	1.4	1.4	1.4	--



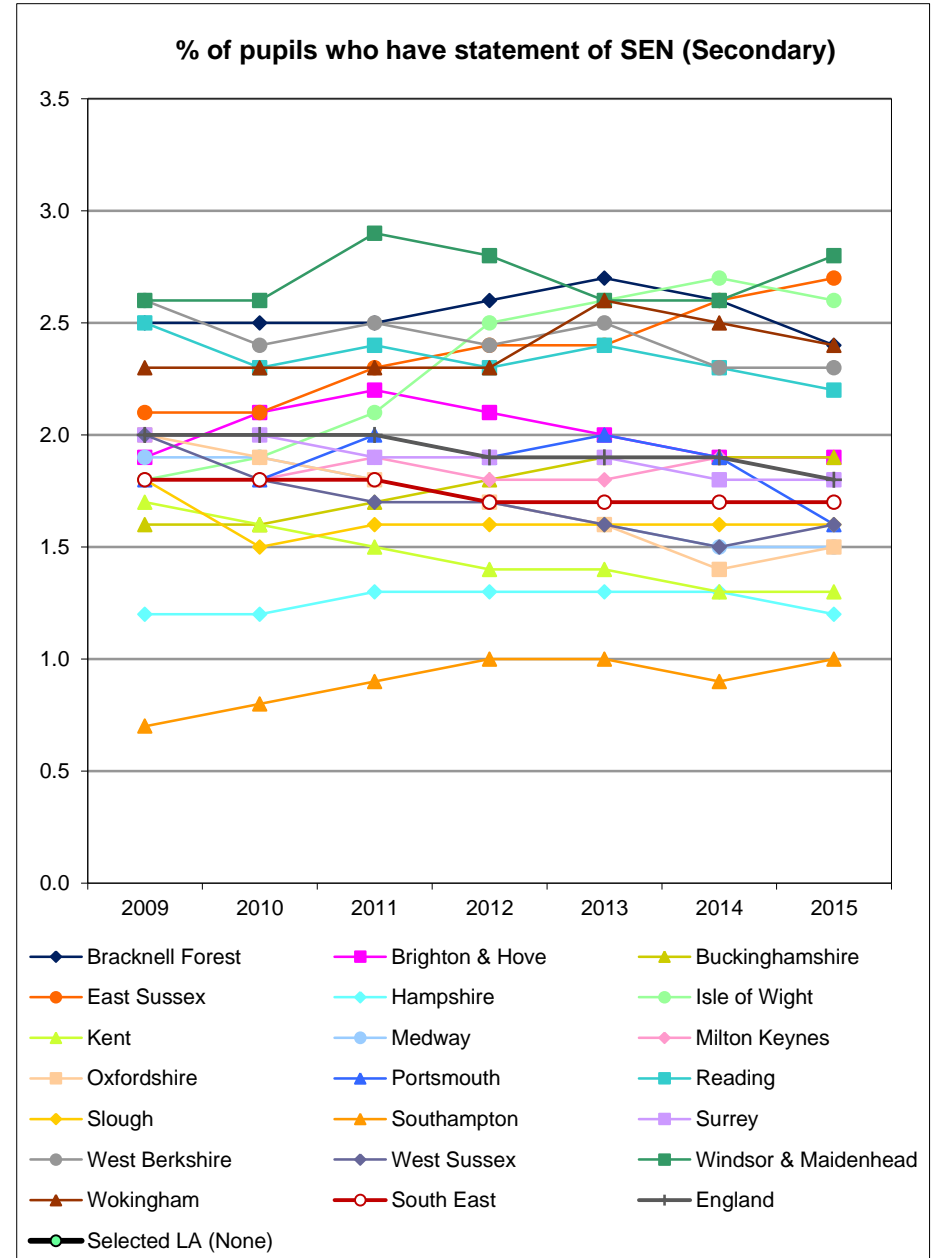
### % of pupils who have statement of SEN (primary)

	2009	2010	2011	2012	2013	2014	2015	2015 Rank
Bracknell Forest	17.9	16.9	18.2	15.8	14.0	13.4	12.0	10
Brighton & Hove	23.3	24.2	24.1	23.7	21.7	20.3	16.8	2
Buckinghamshire	14.1	14.5	14.5	13.1	12.2	11.8	9.4	19
East Sussex	19.0	20.5	19.3	18.8	17.6	14.9	11.7	14
Hampshire	20.2	19.5	18.0	16.9	15.1	13.9	12.5	8
Isle of Wight	14.0	13.0	14.6	15.0	15.5	13.9	13.3	6
Kent	23.6	23.9	23.4	21.2	19.0	16.7	11.9	12
Medway	25.5	25.7	24.3	23.2	21.5	20.4	17.2	1
Milton Keynes	16.3	16.8	16.8	17.1	16.2	14.4	12.0	10
Oxfordshire	16.4	17.0	17.1	16.4	15.8	15.0	12.2	9
Portsmouth	24.3	23.6	21.1	20.4	18.6	16.3	11.7	14
Reading	18.9	19.2	19.3	18.0	15.7	14.3	11.8	13
Slough	19.3	19.9	18.3	16.3	16.4	14.1	14.3	4
Southampton	22.2	21.2	19.4	17.9	17.7	17.4	15.8	3
Surrey	15.5	15.4	15.0	14.4	13.6	12.3	10.7	16
West Berkshire	17.9	17.4	15.2	14.2	13.7	12.7	10.4	17
West Sussex	19.5	19.1	18.5	18.1	16.7	15.7	13.2	7
Windsor & Maidenhead	17.4	17.7	16.4	16.2	15.7	14.9	14.0	5
Wokingham	12.0	13.4	14.2	13.3	12.7	12.4	10.2	18
South East	19.3	19.4	18.7	17.6	16.3	14.9	12.3	--
England	18.2	18.5	17.9	17.1	16.0	15.2	13.0	--



### % of pupils who have statement of SEN (Secondary)

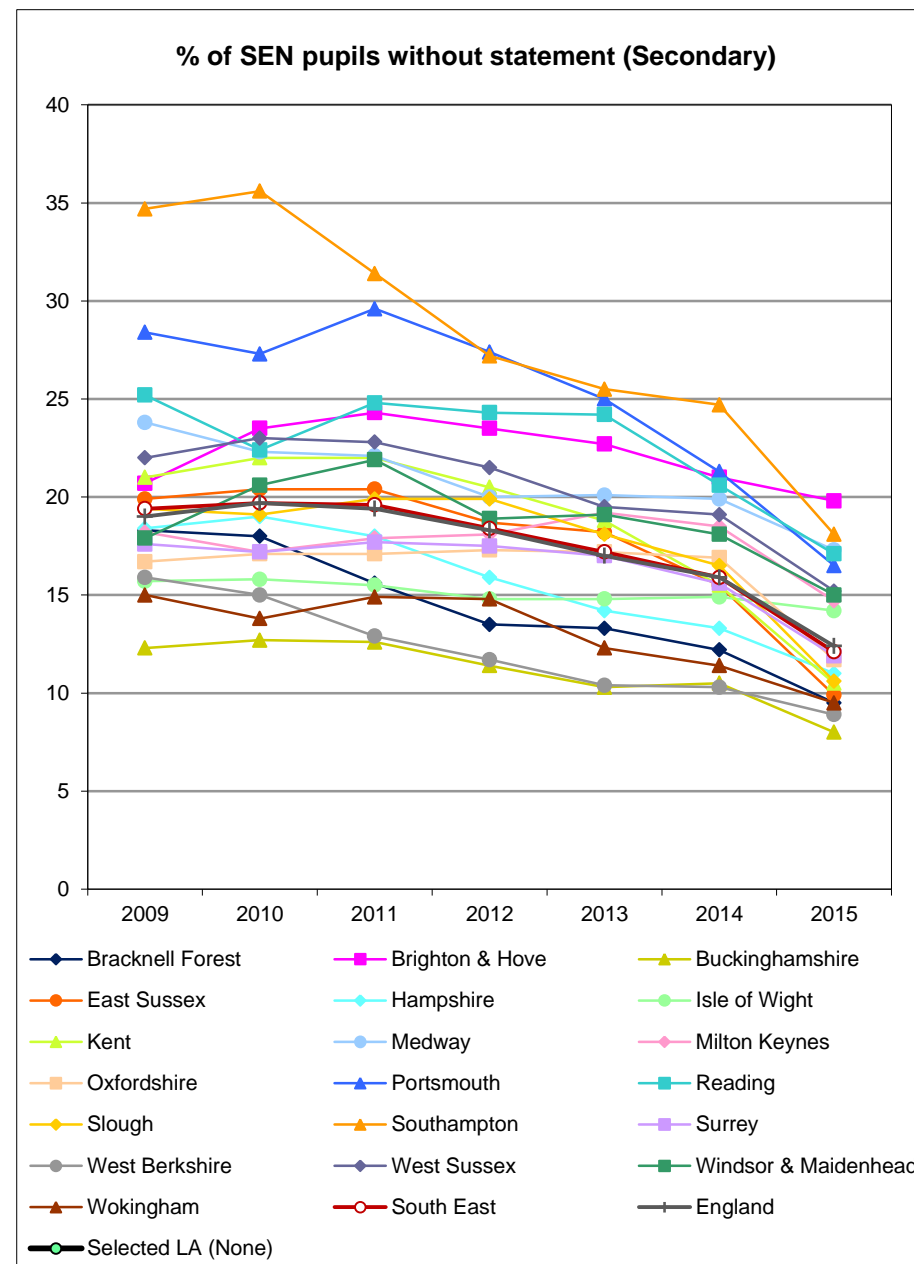
	2009	2010	2011	2012	2013	2014	2015	2015 Rank
Bracknell Forest	2.5	2.5	2.5	2.6	2.7	2.6	2.4	4
Brighton & Hove	1.9	2.1	2.2	2.1	2.0	1.9	1.9	8
Buckinghamshire	1.6	1.6	1.7	1.8	1.9	1.9	1.9	8
East Sussex	2.1	2.1	2.3	2.4	2.4	2.6	2.7	2
Hampshire	1.2	1.2	1.3	1.3	1.3	1.3	1.2	18
Isle of Wight	1.8	1.9	2.1	2.5	2.6	2.7	2.6	3
Kent	1.7	1.6	1.5	1.4	1.4	1.3	1.3	17
Medway	1.9	1.9	1.8	1.7	1.6	1.5	1.5	15
Milton Keynes	1.8	1.8	1.9	1.8	1.8	1.9	1.8	10
Oxfordshire	2.0	1.9	1.8	1.7	1.6	1.4	1.5	15
Portsmouth	1.8	1.8	2.0	1.9	2.0	1.9	1.6	12
Reading	2.5	2.3	2.4	2.3	2.4	2.3	2.2	7
Slough	1.8	1.5	1.6	1.6	1.6	1.6	1.6	12
Southampton	0.7	0.8	0.9	1.0	1.0	0.9	1.0	19
Surrey	2.0	2.0	1.9	1.9	1.9	1.8	1.8	10
West Berkshire	2.6	2.4	2.5	2.4	2.5	2.3	2.3	6
West Sussex	2.0	1.8	1.7	1.7	1.6	1.5	1.6	12
Windsor & Maidenhead	2.6	2.6	2.9	2.8	2.6	2.6	2.8	1
Wokingham	2.3	2.3	2.3	2.3	2.6	2.5	2.4	4
South East	1.8	1.8	1.8	1.7	1.7	1.7	1.7	--
England	2.0	2.0	2.0	1.9	1.9	1.9	1.8	--





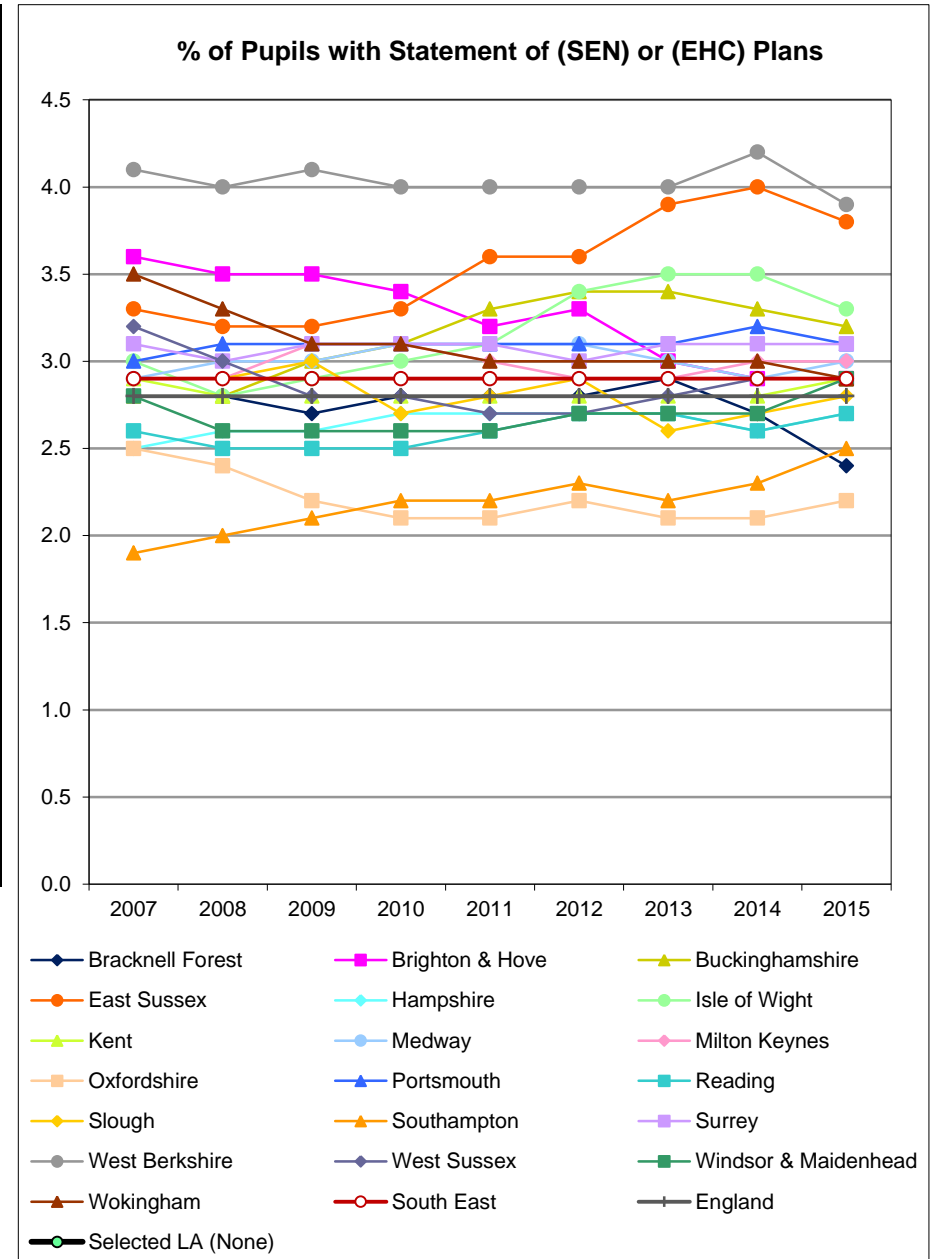
### % of SEN pupils without statement (Secondary)

	2009	2010	2011	2012	2013	2014	2015	2015 Rank
Bracknell Forest	18.3	18.0	15.6	13.5	13.3	12.2	9.5	16
Brighton & Hove	20.7	23.5	24.3	23.5	22.7	21.0	19.8	1
Buckinghamshire	12.3	12.7	12.6	11.4	10.3	10.5	8.0	19
East Sussex	19.9	20.4	20.4	18.7	18.2	15.5	9.9	15
Hampshire	18.4	19.0	18.0	15.9	14.2	13.3	11.0	12
Isle of Wight	15.7	15.8	15.5	14.8	14.8	14.9	14.2	9
Kent	21.0	22.0	22.0	20.5	18.8	15.5	10.5	14
Medway	23.8	22.3	22.1	20.0	20.1	19.9	17.3	3
Milton Keynes	18.2	17.2	17.9	18.1	19.2	18.5	14.7	8
Oxfordshire	16.7	17.1	17.1	17.3	17.2	16.9	11.7	11
Portsmouth	28.4	27.3	29.6	27.4	25.0	21.3	16.5	5
Reading	25.2	22.4	24.8	24.3	24.2	20.6	17.1	4
Slough	19.4	19.1	19.9	19.9	18.1	16.5	10.6	13
Southampton	34.7	35.6	31.4	27.2	25.5	24.7	18.1	2
Surrey	17.6	17.2	17.7	17.5	17.0	15.6	11.9	10
West Berkshire	15.9	15.0	12.9	11.7	10.4	10.3	8.9	18
West Sussex	22.0	23.0	22.8	21.5	19.5	19.1	15.2	6
Windsor & Maidenhead	17.9	20.6	21.9	18.9	19.1	18.1	15.0	7
Wokingham	15.0	13.8	14.9	14.8	12.3	11.4	9.5	16
South East	19.4	19.7	19.6	18.4	17.2	15.9	12.1	--
England	19.0	19.7	19.4	18.3	17.0	15.9	12.4	--



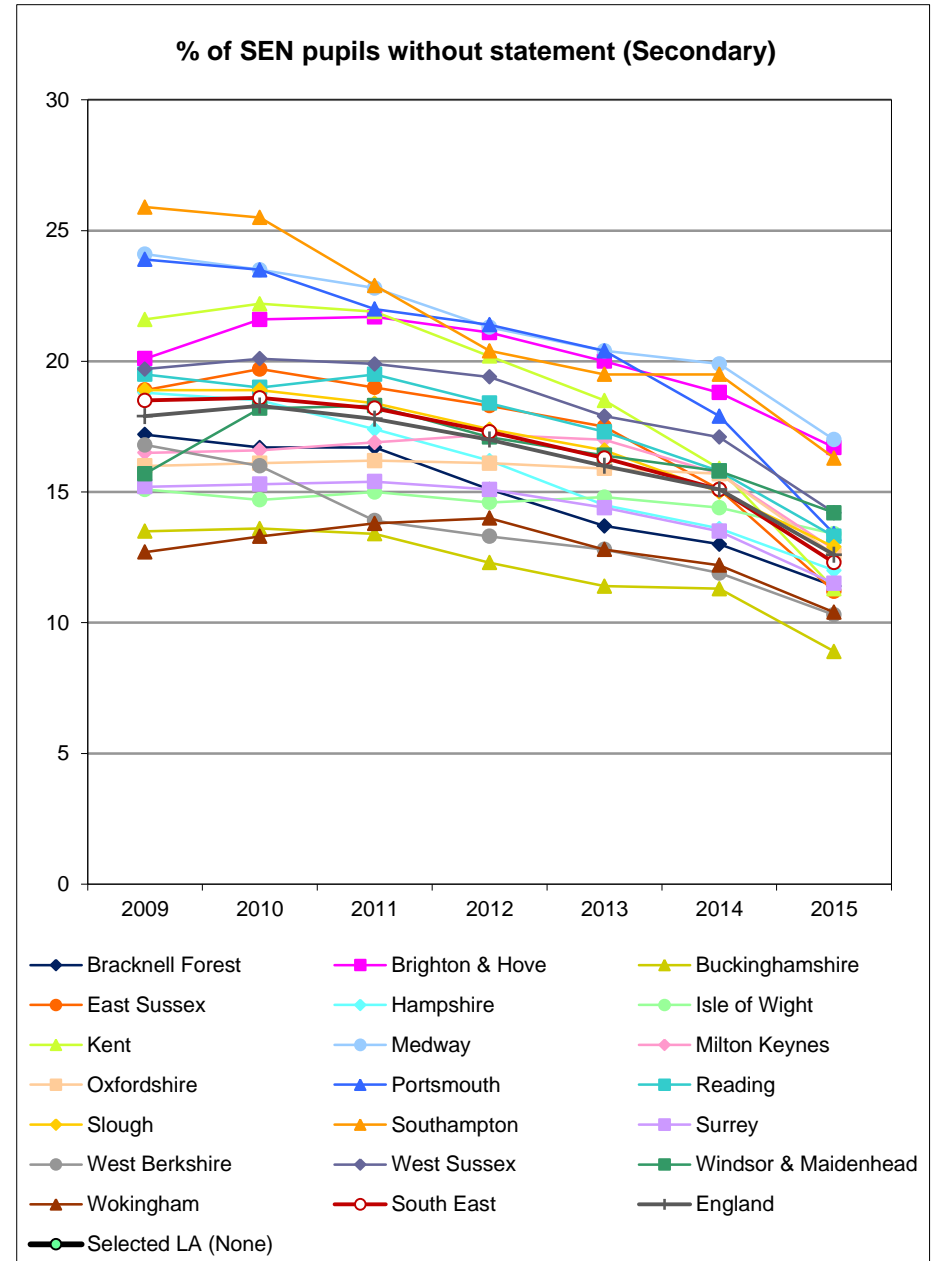
## % of Pupils with Statement of (SEN) or (EHC) Plans

	2007	2008	2009	2010	2011	2012	2013	2014	2015	2015 Rank
Bracknell Forest	2.8	2.8	2.7	2.8	2.8	2.8	2.9	2.7	2.4	18
Brighton & Hove	3.6	3.5	3.5	3.4	3.2	3.3	3.0	2.9	2.9	9
Buckinghamshire	2.8	2.8	3.0	3.1	3.3	3.4	3.4	3.3	3.2	4
East Sussex	3.3	3.2	3.2	3.3	3.6	3.6	3.9	4.0	3.8	2
Hampshire	2.5	2.6	2.6	2.7	2.7	2.7	2.7	2.6	2.7	15
Isle of Wight	3.0	2.8	2.9	3.0	3.1	3.4	3.5	3.5	3.3	3
Kent	2.9	2.8	2.8	2.8	2.8	2.8	2.8	2.8	2.9	9
Medway	2.9	3.0	3.0	3.1	3.1	3.1	3.0	2.9	3.0	7
Milton Keynes	2.9	2.9	3.1	3.1	3.0	2.9	2.9	3.0	3.0	7
Oxfordshire	2.5	2.4	2.2	2.1	2.1	2.2	2.1	2.1	2.2	19
Portsmouth	3.0	3.1	3.1	3.1	3.1	3.1	3.1	3.2	3.1	5
Reading	2.6	2.5	2.5	2.5	2.6	2.7	2.7	2.6	2.7	15
Slough	2.9	2.9	3.0	2.7	2.8	2.9	2.6	2.7	2.8	14
Southampton	1.9	2.0	2.1	2.2	2.2	2.3	2.2	2.3	2.5	17
Surrey	3.1	3.0	3.1	3.1	3.1	3.0	3.1	3.1	3.1	5
West Berkshire	4.1	4.0	4.1	4.0	4.0	4.0	4.0	4.2	3.9	1
West Sussex	3.2	3.0	2.8	2.8	2.7	2.7	2.8	2.9	2.9	9
Windsor & Maidenhead	2.8	2.6	2.6	2.6	2.6	2.7	2.7	2.7	2.9	9
Wokingham	3.5	3.3	3.1	3.1	3.0	3.0	3.0	3.0	2.9	9
South East	2.9	2.9	2.9	2.9	2.9	2.9	2.9	2.9	2.9	--
England	2.8	2.8	2.8	2.8	2.8	2.8	2.8	2.8	2.8	--



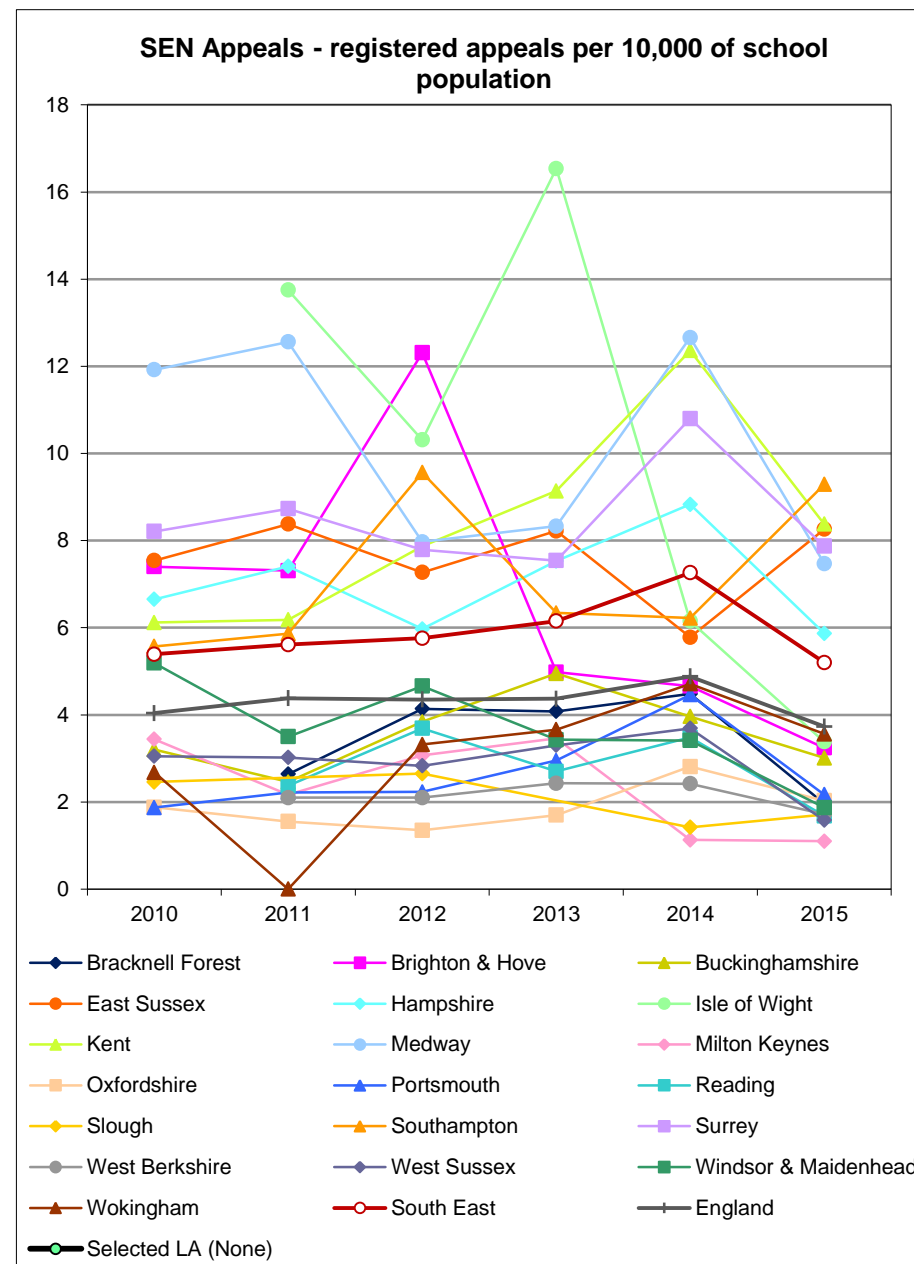
### % of SEN pupils without statement (Secondary)

	2009	2010	2011	2012	2013	2014	2015	2015 Rank
Bracknell Forest	17.2	16.7	16.7	15.1	13.7	13.0	11.4	14
Brighton & Hove	20.1	21.6	21.7	21.1	20.0	18.8	16.7	2
Buckinghamshire	13.5	13.6	13.4	12.3	11.4	11.3	8.9	19
East Sussex	18.9	19.7	19.0	18.3	17.5	15.1	11.2	16
Hampshire	18.8	18.5	17.4	16.2	14.5	13.6	12.0	12
Isle of Wight	15.1	14.7	15.0	14.6	14.8	14.4	13.4	6
Kent	21.6	22.2	21.9	20.2	18.5	15.9	11.3	15
Medway	24.1	23.5	22.8	21.3	20.4	19.9	17.0	1
Milton Keynes	16.5	16.6	16.9	17.2	17.0	15.7	12.8	10
Oxfordshire	16.0	16.1	16.2	16.1	15.9	15.7	12.6	11
Portsmouth	23.9	23.5	22.0	21.4	20.4	17.9	13.4	6
Reading	19.5	19.0	19.5	18.4	17.3	15.8	13.3	8
Slough	18.9	18.9	18.4	17.4	16.6	15.0	12.9	9
Southampton	25.9	25.5	22.9	20.4	19.5	19.5	16.3	3
Surrey	15.2	15.3	15.4	15.1	14.4	13.5	11.5	13
West Berkshire	16.8	16.0	13.9	13.3	12.8	11.9	10.3	18
West Sussex	19.7	20.1	19.9	19.4	17.9	17.1	14.2	4
Windsor & Maidenhead	15.7	18.2	18.3	17.1	16.4	15.8	14.2	4
Wokingham	12.7	13.3	13.8	14.0	12.8	12.2	10.4	17
South East	18.5	18.6	18.2	17.3	16.3	15.1	12.3	--
England	17.9	18.3	17.8	17.0	16.0	15.1	12.6	--



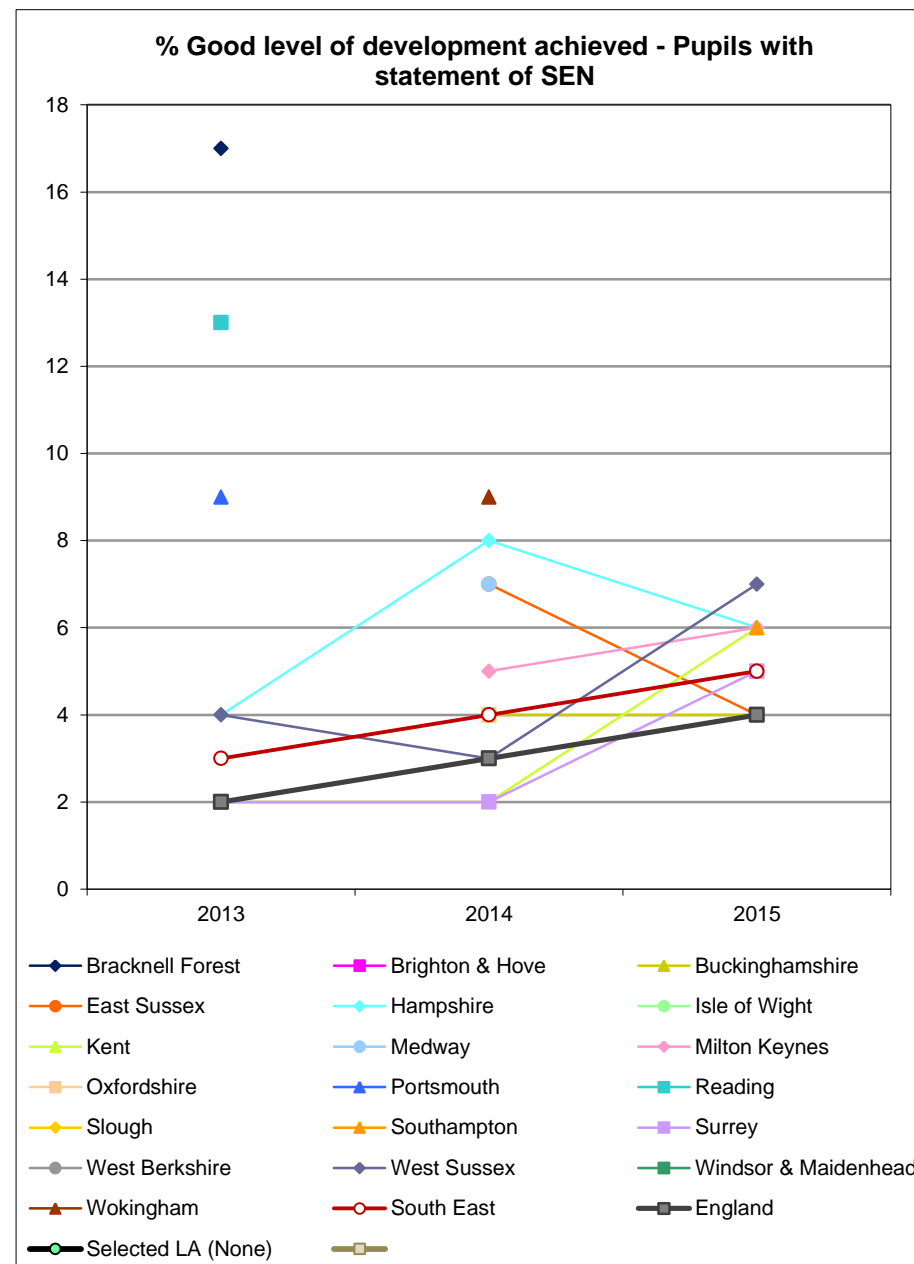
## SEN Appeals - registered appeals per 10,000 of school population Academic year ending

	2010	2011	2012	2013	2014	2015	2015 Rank
Bracknell Forest		2.6	4.1	4.1	4.5	2.0	13
Brighton & Hove	7.4	7.3	12.3	5.0	4.7	3.2	9
Buckinghamshire	3.2	2.5	3.8	5.0	4.0	3.0	10
East Sussex	7.5	8.4	7.3	8.2	5.8	8.3	3
Hampshire	6.7	7.4	6.0	7.5	8.8	5.9	6
Isle of Wight		13.8	10.3	16.5	6.2	3.4	8
Kent	6.1	6.2	7.9	9.1	12.4	8.4	2
Medway	11.9	12.6	8.0	8.3	12.7	7.5	5
Milton Keynes	3.4	2.2	3.1	3.5	1.1	1.1	19
Oxfordshire	1.9	1.6	1.4	1.7	2.8	2.0	12
Portsmouth	1.9	2.2	2.2	3.0	4.5	2.2	11
Reading		2.4	3.7	2.7	3.5	1.7	17
Slough	2.5		2.7		1.4	1.7	16
Southampton	5.6	5.9	9.6	6.3	6.2	9.3	1
Surrey	8.2	8.7	7.8	7.5	10.8	7.9	4
West Berkshire		2.1	2.1	2.4	2.4	1.7	15
West Sussex	3.1	3.0	2.8	3.3	3.7	1.6	18
Windsor & Maidenhead	5.2	3.5	4.7	3.4	3.4	1.9	14
Wokingham	2.7	-	3.3	3.7	4.7	3.6	7
South East	5.4	5.6	5.8	6.2	7.3	5.2	--
England	4.0	4.4	4.4	4.4	4.9	3.7	--



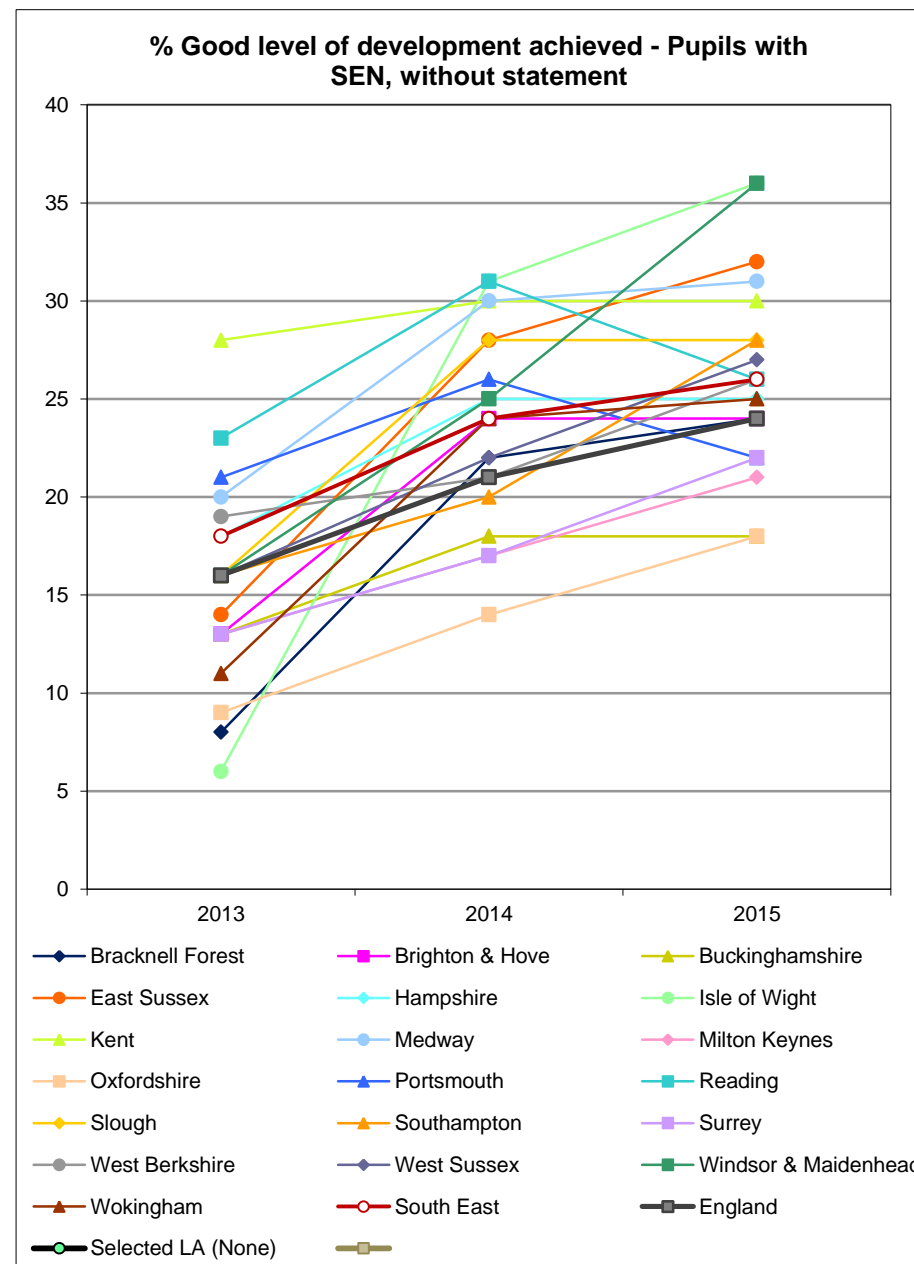
## % Good level of development achieved - Pupils with statement of SEN

	2013	2014	2015	2015 Rank
Bracknell Forest	17.0			#N/A
Brighton & Hove				#N/A
Buckinghamshire		4.0	4.0	8
East Sussex		7.0	4.0	8
Hampshire	4.0	8.0	6.0	2
Isle of Wight				#N/A
Kent	2.0	2.0	6.0	2
Medway		7.0		#N/A
Milton Keynes		5.0	6.0	2
Oxfordshire		4.0	5.0	6
Portsmouth	9.0			#N/A
Reading	13.0			#N/A
Slough				#N/A
Southampton			6.0	2
Surrey	2.0	2.0	5.0	6
West Berkshire				#N/A
West Sussex	4.0	3.0	7.0	1
Windsor & Maidenhead				#N/A
Wokingham		9.0		#N/A
South East	3.0	4.0	5.0	--
England	2.0	3.0	4.0	--
England (All Pupils)	51.7	60.4	66.3	--



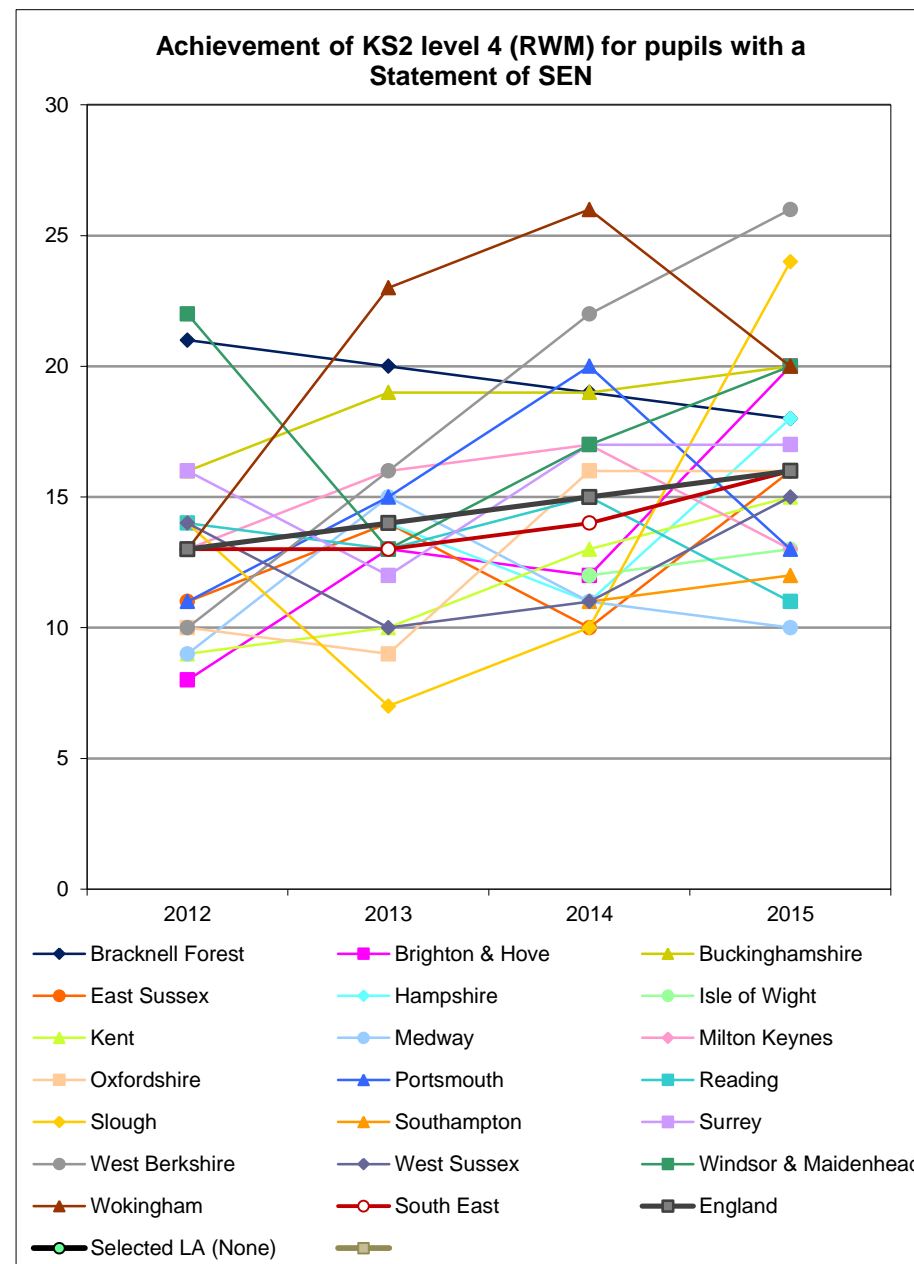
### % Good level of development achieved - Pupils with SEN, without statement

	2013	2014	2015	2015 Rank
Bracknell Forest	8.0	22.0	24.0	13
Brighton & Hove	13.0	24.0	24.0	13
Buckinghamshire	13.0	18.0	18.0	18
East Sussex	14.0	28.0	32.0	3
Hampshire	18.0	25.0	25.0	11
Isle of Wight	6.0	31.0	36.0	1
Kent	28.0	30.0	30.0	5
Medway	20.0	30.0	31.0	4
Milton Keynes	13.0	17.0	21.0	17
Oxfordshire	9.0	14.0	18.0	18
Portsmouth	21.0	26.0	22.0	15
Reading	23.0	31.0	26.0	9
Slough	16.0	28.0	28.0	6
Southampton	16.0	20.0	28.0	6
Surrey	13.0	17.0	22.0	15
West Berkshire	19.0	21.0	26.0	9
West Sussex	16.0	22.0	27.0	8
Windsor & Maidenhead	16.0	25.0	36.0	1
Wokingham	11.0	24.0	25.0	11
South East	18.0	24.0	26.0	--
England	16.0	21.0	24.0	--
England (All Pupils)	51.7	60.4	66.3	--



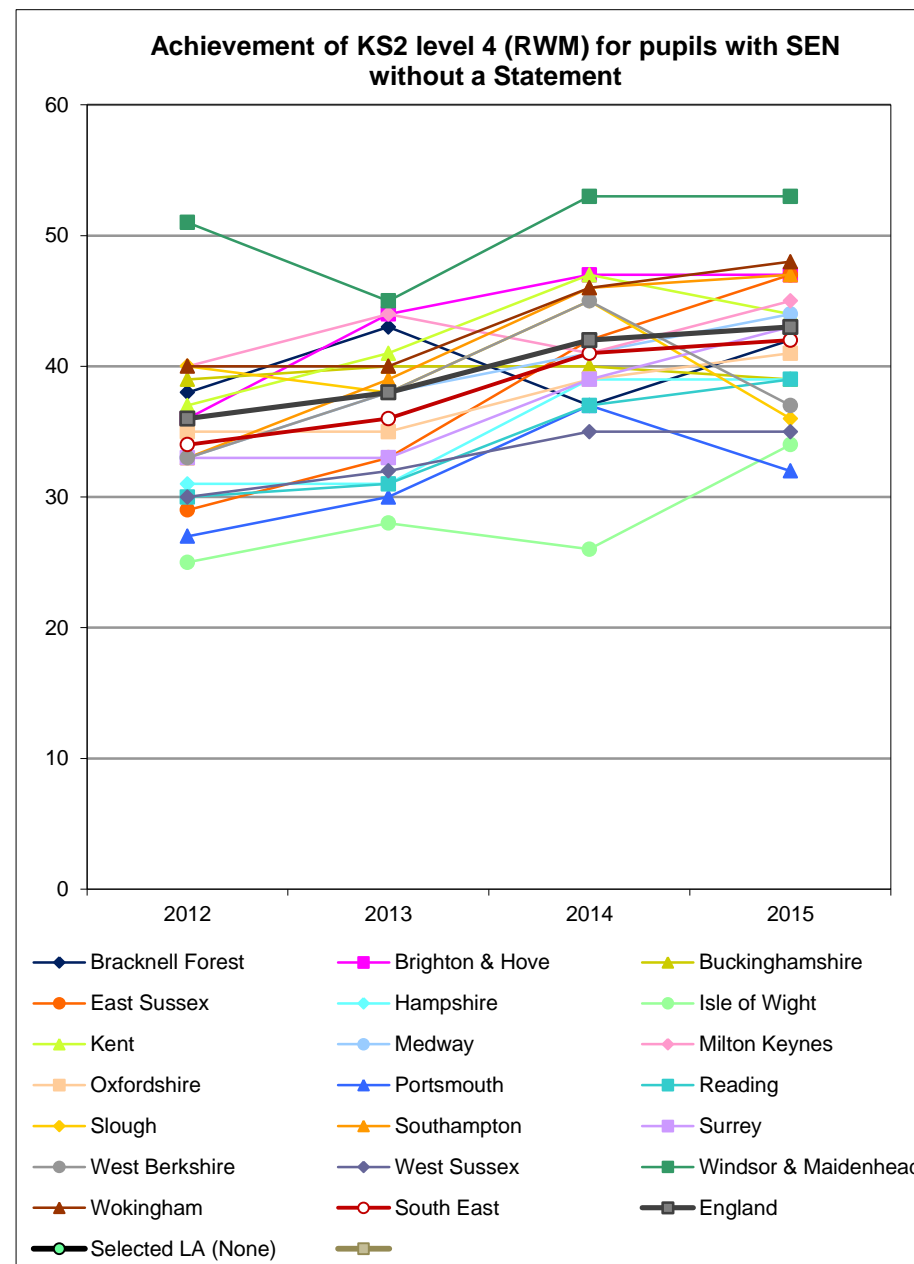
## Achievement of KS2 level 4 (RWM) for pupils with a Statement of SEN

	2012	2013	2014	2015	2015 Rank
Bracknell Forest	21.0	20.0	19.0	18.0	7
Brighton & Hove	8.0	13.0	12.0	20.0	3
Buckinghamshire	16.0	19.0	19.0	20.0	3
East Sussex	11.0	14.0	10.0	16.0	10
Hampshire	13.0	14.0	11.0	18.0	7
Isle of Wight			12.0	13.0	14
Kent	9.0	10.0	13.0	15.0	12
Medway	9.0	15.0	11.0	10.0	19
Milton Keynes	13.0	16.0	17.0	13.0	14
Oxfordshire	10.0	9.0	16.0	16.0	10
Portsmouth	11.0	15.0	20.0	13.0	14
Reading	14.0	13.0	15.0	11.0	18
Slough	14.0	7.0	10.0	24.0	2
Southampton			11.0	12.0	17
Surrey	16.0	12.0	17.0	17.0	9
West Berkshire	10.0	16.0	22.0	26.0	1
West Sussex	14.0	10.0	11.0	15.0	12
Windsor & Maidenhead	22.0	13.0	17.0	20.0	3
Wokingham	13.0	23.0	26.0	20.0	3
South East	13.0	13.0	14.0	16.0	--
England	13.0	14.0	15.0	16.0	--
England (All Pupils)	75.0	75.0	78.0	80.0	--



### Achievement of KS2 level 4 (RWM) for pupils with SEN without a Statement

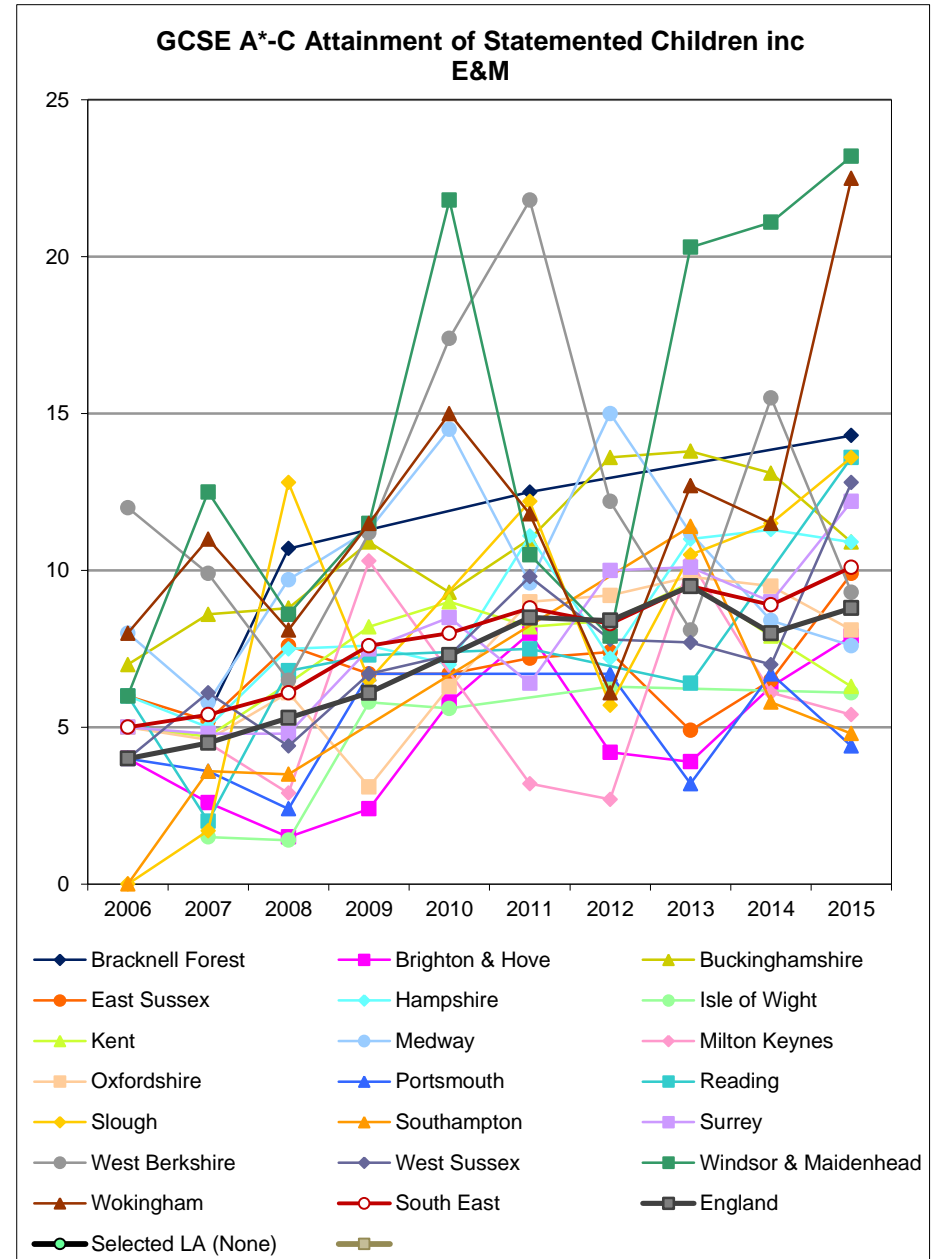
	2012	2013	2014	2015	2015 Rank
Bracknell Forest	38.0	43.0	37.0	42.0	10
Brighton & Hove	36.0	44.0	47.0	47.0	3
Buckinghamshire	39.0	40.0	40.0	39.0	12
East Sussex	29.0	33.0	42.0	47.0	3
Hampshire	31.0	31.0	39.0	39.0	12
Isle of Wight	25.0	28.0	26.0	34.0	18
Kent	37.0	41.0	47.0	44.0	7
Medway	33.0	38.0	41.0	44.0	7
Milton Keynes	40.0	44.0	41.0	45.0	6
Oxfordshire	35.0	35.0	39.0	41.0	11
Portsmouth	27.0	30.0	37.0	32.0	19
Reading	30.0	31.0	37.0	39.0	12
Slough	40.0	38.0	45.0	36.0	16
Southampton	33.0	39.0	46.0	47.0	3
Surrey	33.0	33.0	39.0	43.0	9
West Berkshire	33.0	38.0	45.0	37.0	15
West Sussex	30.0	32.0	35.0	35.0	17
Windsor & Maidenhead	51.0	45.0	53.0	53.0	1
Wokingham	40.0	40.0	46.0	48.0	2
South East	34.0	36.0	41.0	42.0	--
England	36.0	38.0	42.0	43.0	--
England (All Pupils)	75.0	75.0	78.0	80.0	--





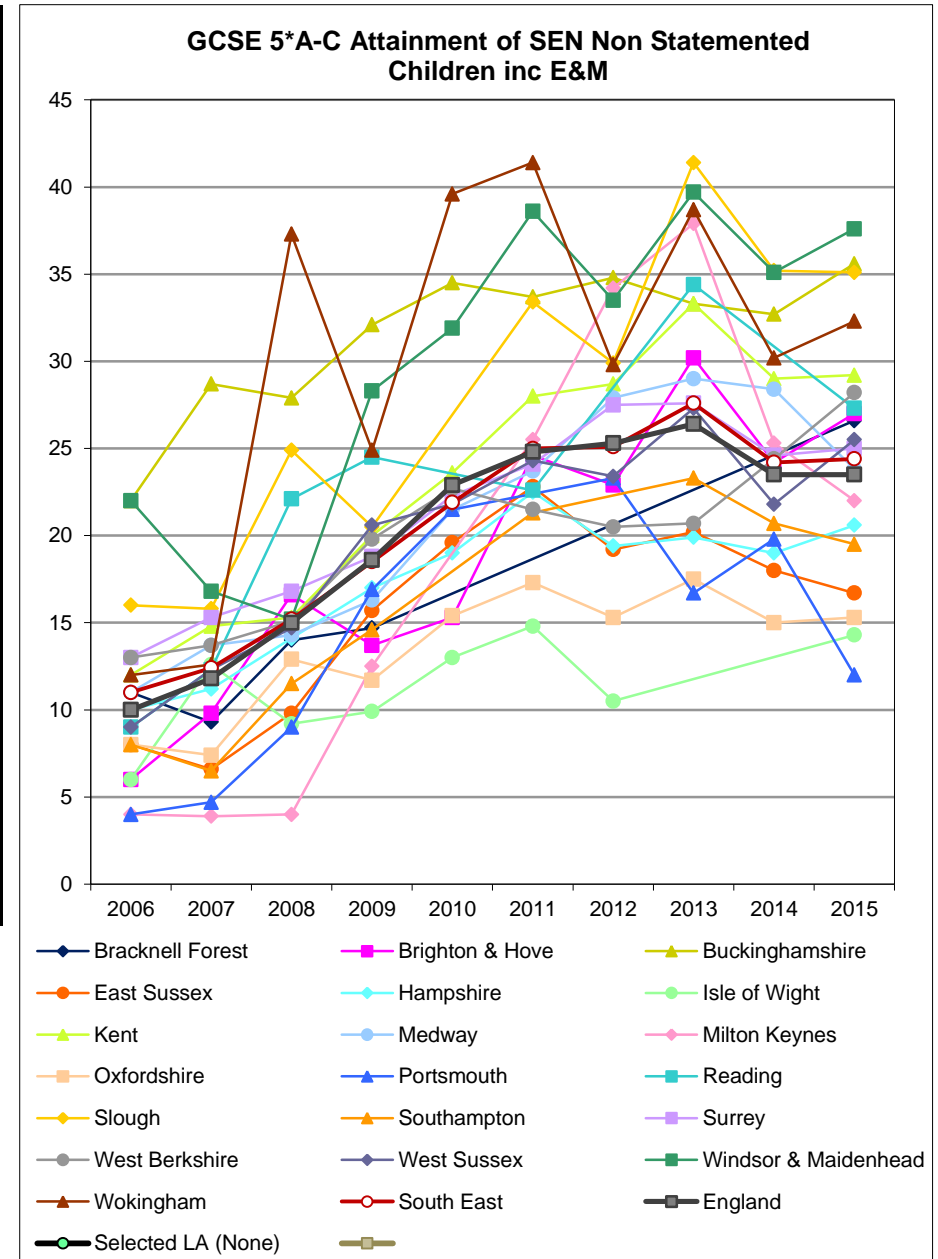
### GCSE A\*-C Attainment of Statemented Children inc E&M

	2006	2007	2008	2009	2010	2011	2012	2013	2014	2015	2015 Rank
Bracknell Forest		5.4	10.7			12.5				14.3	3
Brighton & Hove	4.0	2.6	1.5	2.4	5.8	8.0	4.2	3.9	6.3	7.9	13
Buckinghamshire	7.0	8.6	8.8	10.9	9.3	11.0	13.6	13.8	13.1	10.9	8
East Sussex	6.0	5.2	7.6	6.7	6.7	7.2	7.4	4.9	6.5	9.9	10
Hampshire	6.0	5.0	7.5	7.6	7.0	11.1	7.2	11.0	11.3	10.9	8
Isle of Wight		1.5	1.4	5.8	5.6		6.3			6.1	16
Kent		5.0	4.7	6.4	8.2	9.0	8.2	8.4	9.6	7.9	15
Medway	8.0	5.8	9.7	11.3	14.5	9.6	15.0	11.2	8.4	7.6	14
Milton Keynes		4.5	2.9	10.3		3.2	2.7	10.3	6.1	5.4	17
Oxfordshire	5.0	4.6	6.1	3.1	6.3	9.0	9.2	9.8	9.5	8.1	12
Portsmouth	4.0	3.6	2.4	6.7			6.7	3.2	6.7	4.4	19
Reading	6.0	2.0	6.8	7.3		7.5		6.4		13.6	4
Slough	0.0	1.7	12.8	6.5		12.2	5.7	10.5	11.5	13.6	4
Southampton	0.0	3.6	3.5					11.4	5.8	4.8	18
Surrey	5.0	4.8	4.8	7.5	8.5	6.4	10.0	10.1	9.0	12.2	7
West Berkshire	12.0	9.9	6.5	11.2	17.4	21.8	12.2	8.1	15.5	9.3	11
West Sussex	4.0	6.1	4.4	6.7	7.3	9.8	7.8	7.7	7.0	12.8	6
Windsor & Maidenhead	6.0	12.5	8.6	11.5	21.8	10.5	7.9	20.3	21.1	23.2	1
Wokingham	8.0	11.0	8.1	11.5	15.0	11.8	6.1	12.7	11.5	22.5	2
South East	5.0	5.4	6.1	7.6	8.0	8.8	8.3	9.5	8.9	10.1	--
England	4.0	4.5	5.3	6.1	7.3	8.5	8.4	9.5	8.0	8.8	--
England (All Pupils)	45.6	46.3	47.6	49.8	53.5	59.0	59.4	59.2	53.4	53.8	--



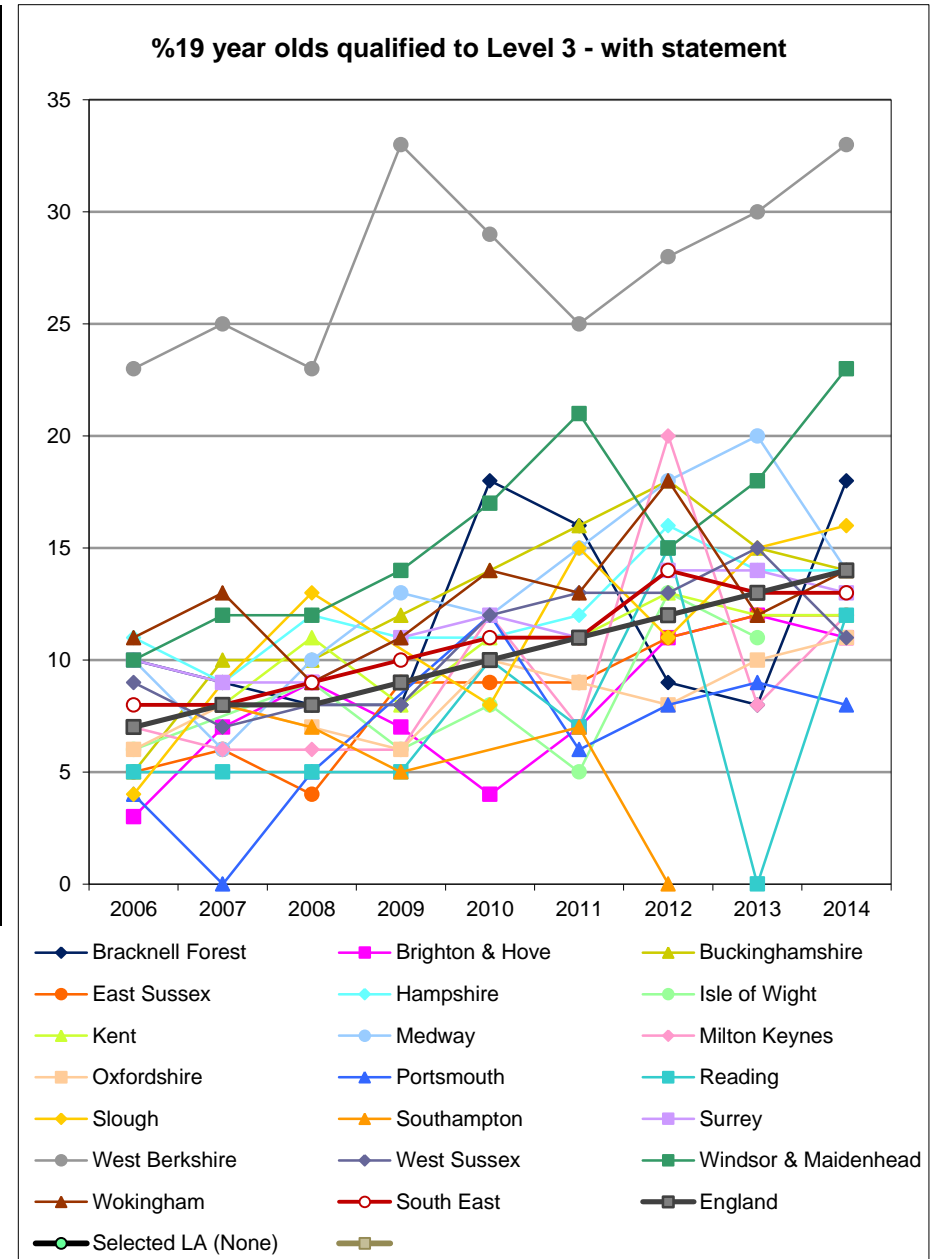
### GCSE 5\*A-C Attainment of SEN Non Statemented Children inc E&M

	2006	2007	2008	2009	2010	2011	2012	2013	2014	2015	2015 Rank
Bracknell Forest	11.0	9.3	14.0	14.7						26.6	9
Brighton & Hove	6.0	9.8	16.6	13.7	15.3	24.6	22.9	30.2	24.2	27.0	8
Buckinghamshire	22.0	28.7	27.9	32.1	34.5	33.7	34.8	33.3	32.7	35.6	2
East Sussex	8.0	6.6	9.8	15.7	19.6	22.8	19.2	20.2	18.0	16.7	16
Hampshire	10.0	11.2	14.1	17.0	19.0	22.5	19.4	19.9	19.0	20.6	14
Isle of Wight	6.0	12.6	9.2	9.9	13.0	14.8	10.5			14.3	18
Kent	12.0	14.8	15.3	20.0	23.6	28.0	28.7	33.3	29.0	29.2	5
Medway	11.0	13.7	14.3	16.3	21.5	23.7	27.9	29.0	28.4	23.8	12
Milton Keynes	4.0	3.9	4.0	12.5		25.5	34.2	37.9	25.3	22.0	13
Oxfordshire	8.0	7.4	12.9	11.7	15.4	17.3	15.3	17.5	15.0	15.3	17
Portsmouth	4.0	4.7	9.0	16.9	21.5		23.3	16.7	19.8	12.0	19
Reading	9.0	12.3	22.1	24.5		22.6		34.4		27.3	7
Slough	16.0	15.8	24.9	20.5		33.4	29.9	41.4	35.2	35.1	3
Southampton	8.0	6.5	11.5	14.6		21.3		23.3	20.7	19.5	15
Surrey	13.0	15.3	16.8	18.8	22.3	24.1	27.5	27.6	24.6	25.0	11
West Berkshire	13.0	13.7	15.1	19.8	22.7	21.5	20.5	20.7	24.4	28.2	6
West Sussex	9.0	12.3	14.7	20.6	21.8	24.3	23.4	27.3	21.8	25.5	10
Windsor & Maidenhead	22.0	16.8	15.2	28.3	31.9	38.6	33.5	39.7	35.1	37.6	1
Wokingham	12.0	12.6	37.3	24.9	39.6	41.4	29.8	38.7	30.2	32.3	4
South East	11.0	12.4	15.2	18.5	21.9	25.0	25.1	27.6	24.2	24.4	--
England	10.0	11.8	15.0	18.6	22.9	24.8	25.3	26.4	23.5	23.5	--
England (All Pupils)	45.6	46.3	47.6	49.8	53.5	59.0	59.4	59.2	53.4	53.8	--



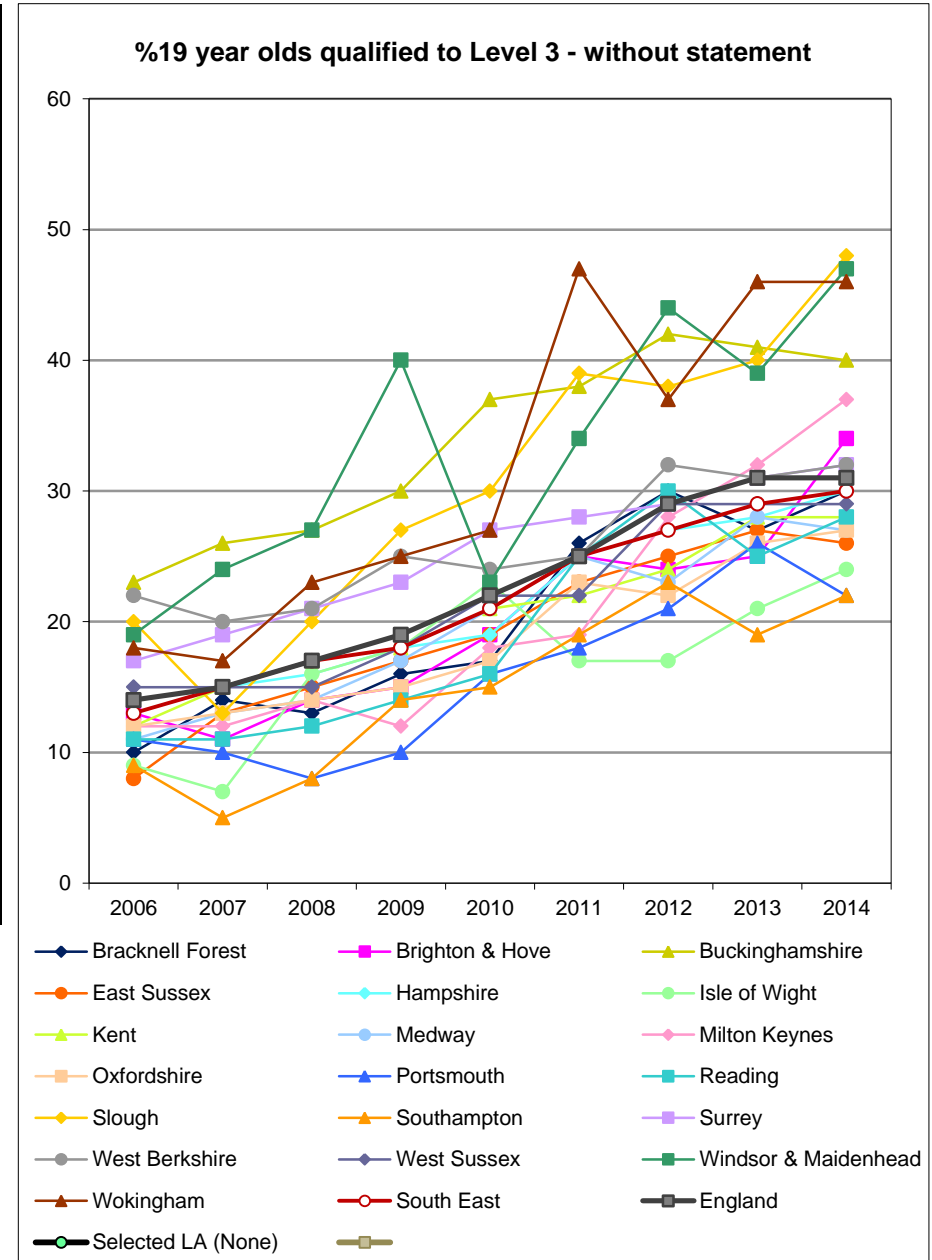
### %19 year olds qualified to Level 3 - with statement

	2006	2007	2008	2009	2010	2011	2012	2013	2014	2014 Rank
Bracknell Forest	10.0	9.0	8.0	8.0	18.0	16.0	9.0	8.0	18.0	3
Brighton & Hove	3.0	7.0	9.0	7.0	4.0	7.0	11.0	12.0	11.0	14
Buckinghamshire	5.0	10.0	10.0	12.0	14.0	16.0	18.0	15.0	14.0	5
East Sussex	5.0	6.0	4.0	9.0	9.0	9.0	11.0	12.0	12.0	10
Hampshire	11.0	9.0	12.0	11.0	11.0	12.0	16.0	14.0	14.0	5
Isle of Wight	6.0		9.0	6.0	8.0	5.0	13.0	11.0		#N/A
Kent	7.0	8.0	11.0	8.0	11.0	11.0	13.0	12.0	12.0	10
Medway	10.0	6.0	10.0	13.0	12.0	15.0	18.0	20.0	14.0	5
Milton Keynes	7.0	6.0	6.0	6.0	12.0	7.0	20.0	8.0	12.0	10
Oxfordshire	6.0	8.0	7.0	6.0	10.0	9.0	8.0	10.0	11.0	14
Portsmouth	4.0	0.0	5.0		12.0	6.0	8.0	9.0	8.0	17
Reading	5.0	5.0	5.0	5.0	10.0	7.0	15.0	0.0	12.0	10
Slough	4.0	9.0	13.0		8.0	15.0	11.0	15.0	16.0	4
Southampton		8.0	7.0	5.0		7.0	0.0			#N/A
Surrey	10.0	9.0	9.0	11.0	12.0	11.0	14.0	14.0	13.0	9
West Berkshire	23.0	25.0	23.0	33.0	29.0	25.0	28.0	30.0	33.0	1
West Sussex	9.0	7.0	8.0	8.0	12.0	13.0	13.0	15.0	11.0	14
Windsor & Maidenhead	10.0	12.0	12.0	14.0	17.0	21.0	15.0	18.0	23.0	2
Wokingham	11.0	13.0	9.0	11.0	14.0	13.0	18.0	12.0	14.0	5
South East	8.0	8.0	9.0	10.0	11.0	11.0	14.0	13.0	13.0	--
England	7.0	8.0	8.0	9.0	10.0	11.0	12.0	13.0	14.0	--
England (Non-SEN)	50.0	51.0	53.0	55.0	58.0	62.0	64.0	66.0	66.0	--



### %19 year olds qualified to Level 3 - without statement

	2006	2007	2008	2009	2010	2011	2012	2013	2014	2014 Rank
Bracknell Forest	10.0	14.0	13.0	16.0	17.0	26.0	30.0	27.0	30.0	9
Brighton & Hove	13.0	11.0	14.0	15.0	19.0	25.0	24.0	25.0	34.0	6
Buckinghamshire	23.0	26.0	27.0	30.0	37.0	38.0	42.0	41.0	40.0	4
East Sussex	8.0	13.0	15.0	17.0	19.0	23.0	25.0	27.0	26.0	16
Hampshire	13.0	15.0	16.0	18.0	19.0	25.0	27.0	28.0	30.0	9
Isle of Wight	9.0	7.0	16.0	18.0	23.0	17.0	17.0	21.0	24.0	17
Kent	12.0	15.0	17.0	18.0	21.0	22.0	24.0	28.0	28.0	12
Medway	11.0	13.0	14.0	17.0	21.0	25.0	23.0	28.0	27.0	14
Milton Keynes	12.0	12.0	14.0	12.0	18.0	19.0	28.0	32.0	37.0	5
Oxfordshire	12.0	13.0	14.0	15.0	17.0	23.0	22.0	26.0	27.0	14
Portsmouth	11.0	10.0	8.0	10.0	16.0	18.0	21.0	26.0	22.0	18
Reading	11.0	11.0	12.0	14.0	16.0	25.0	30.0	25.0	28.0	12
Slough	20.0	13.0	20.0	27.0	30.0	39.0	38.0	40.0	48.0	1
Southampton	9.0	5.0	8.0	14.0	15.0	19.0	23.0	19.0	22.0	18
Surrey	17.0	19.0	21.0	23.0	27.0	28.0	29.0	31.0	32.0	7
West Berkshire	22.0	20.0	21.0	25.0	24.0	25.0	32.0	31.0	32.0	7
West Sussex	15.0	15.0	15.0	18.0	22.0	22.0	29.0	29.0	29.0	11
Windsor & Maidenhead	19.0	24.0	27.0	40.0	23.0	34.0	44.0	39.0	47.0	2
Wokingham	18.0	17.0	23.0	25.0	27.0	47.0	37.0	46.0	46.0	3
South East	13.0	15.0	17.0	18.0	21.0	25.0	27.0	29.0	30.0	--
England	14.0	15.0	17.0	19.0	22.0	25.0	29.0	31.0	31.0	--
England (Non-SEN)	50.0	51.0	53.0	55.0	58.0	62.0	64.0	66.0	66.0	--



### % 16-17 yr olds with SEN in education & training, as at 31 December

	2014	2014 Rank
Bracknell Forest	88.9	4
Brighton & Hove	80.3	15
Buckinghamshire	89.1	3
East Sussex	83.3	11
Hampshire	79.5	16
Isle of Wight	88.6	5
Kent	79.3	17
Medway	86.8	7
Milton Keynes	86.9	6
Oxfordshire	83.9	10
Portsmouth	83.0	12
Reading	80.7	14
Slough	91.6	1
Southampton	85.2	9
Surrey	80.8	13
West Berkshire	91.6	2
West Sussex	79.0	18
Windsor & Maidenhead	57.8	19
Wokingham	86.0	8
South East	82.1	--
England	86.1	--
England (All Pupils)	90.2	--

